

JASPER COUNTY BOARD OF COMMISSIONERS

will have a

Work Session

Monday, March 22, 2021

At 6:00 p.m.

Small Court Room, 2nd Floor

Topics for Discussion include:

- 1. CGEMC Broadband Initiative – Jasper County Participation**
- 2. No Littering Program Signage**
- 3. Additional Topics as Needed**

******Details for Meeting Attendance******

- All persons will be temperature checked at the door.**
- Temperature readings of 100.4 or higher will not be allowed to enter the building.**
- Masks will be provided and recommended to be worn, but not required.**
 - Seating May be Limited.**

Work Session Item – 1:

Department: Board of Commissioners

Date: March 22, 2021

Subject:

Central Georgia EMC Broadband Initiative – Jasper County Participation

Summary:

Herschel Arant, CGEMC Senior Vice President of Engineering and Energy Supply and Ben Thomason, CGEMC Chief Operating Officer will present a presentation and discussion of the Central Georgia EMC Broadband Initiative for Jasper County.

Central Georgia EMC Broadband Initiative

- According to the Georgia Department of Community Affairs
 - There are 7,311 service locations in Jasper County
 - 4,601 (63%) are unserved by broadband
- Central Georgia EMC (CGEMC) data summary
 - CGEMC serves 4,967 total locations in Jasper County and 3,893 locations in Jasper County that are unserved by broadband
 - CGEMC provides electric service to about 85% of the locations in Jasper County that are unserved by broadband
 - CGEMC maintains about 738 miles of power lines in Jasper County with plans to make broadband available to all EMC customers
 - CGEMC anticipates about \$19.1 million in new investment related to the fiber network
 - Timing of this investment is still in the planning stages

Unserved Georgia by County

- Legend**
- GBDI Petitions
 - Served & Unserved Areas
 - Served
 - Unserved
 - No Locations

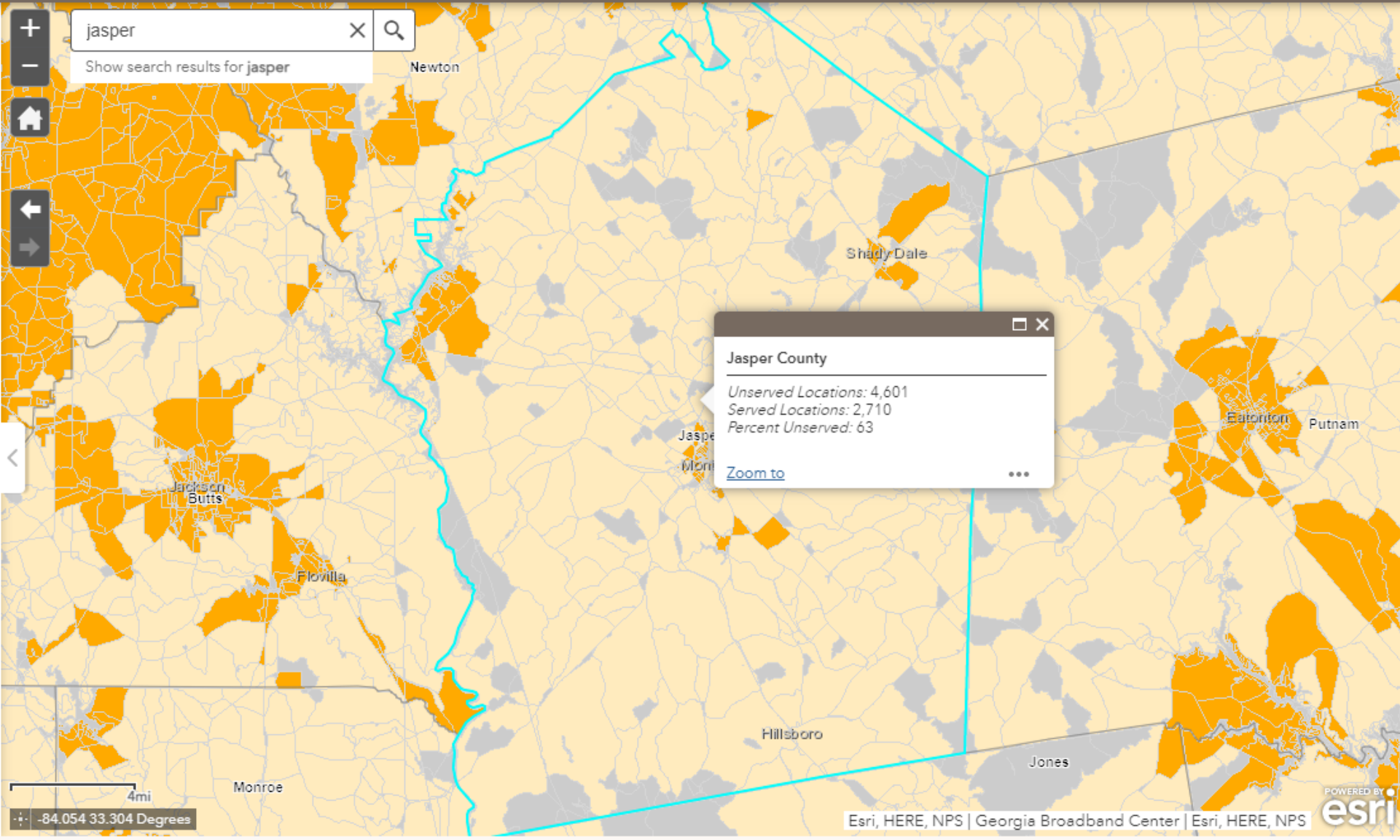
Description

This map focuses on unserved broadband statistics for Georgia counties. Click in the map or search by county to see county statistics. Census block level availability will appear once zoomed in.

County statistics are based on a fixed, terrestrial broadband definition of 25 Mbps down and 3 Mbps up, and where the broadband service is available to more than 80% of locations in a census block. Census blocks that did not meet this definition are delineated as 'Unserved'. The map depicts access to broadband, not subscription to broadband.

Broadband data is provided by the various Internet Service Providers of Georgia.

Location data are from commercially available sources.



Jasper County

Unserved Locations: 4,601
Served Locations: 2,710
Percent Unserved: 63

[Zoom to](#)

4mi
-84.054 33.304 Degrees

Unserved Georgia by County

Legend

- GBDI Petitions
- Served & Unserved Areas
 - Served
 - Unserved
 - No Locations

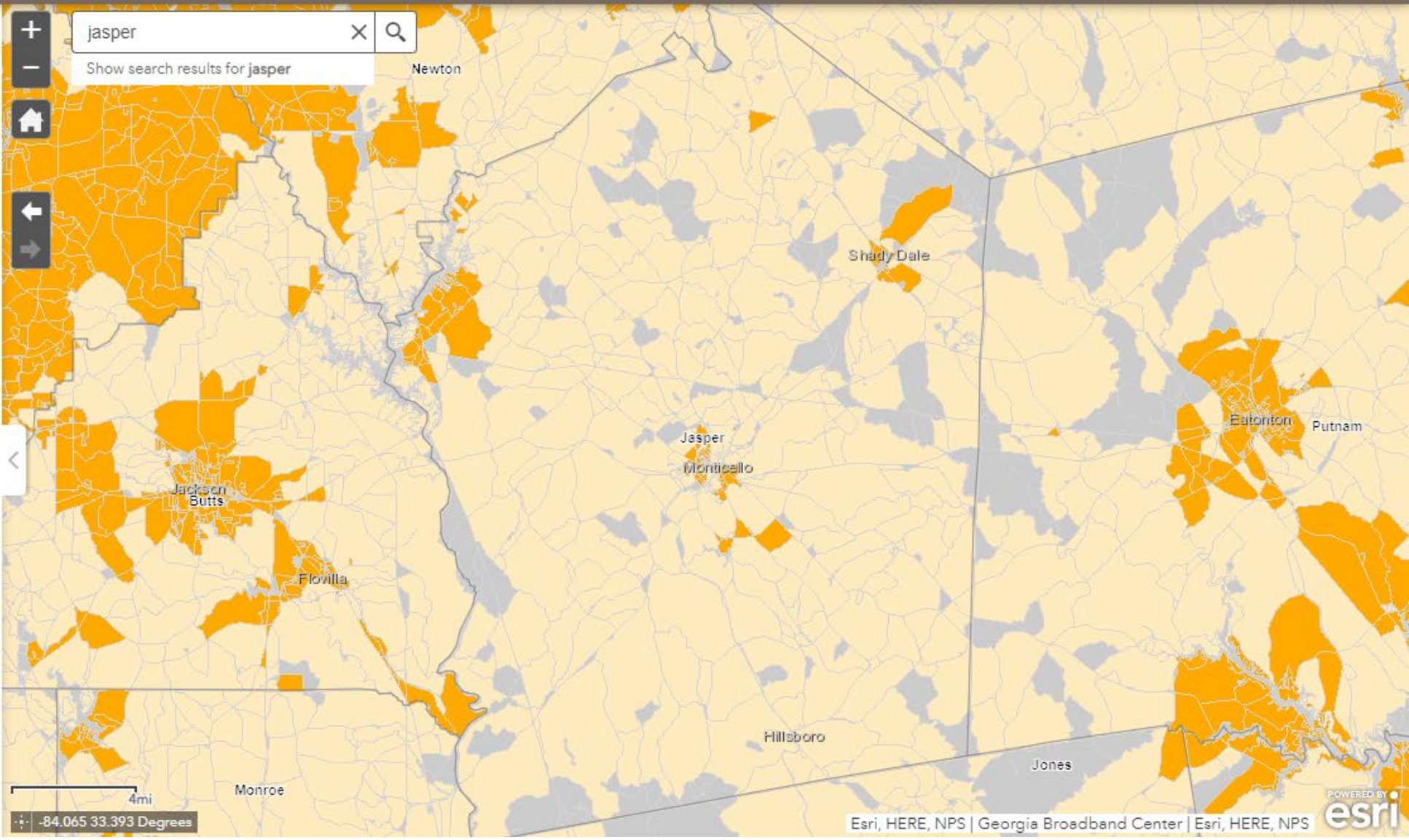
Description

This map focuses on unserved broadband statistics for Georgia counties. Click in the map or search by county to see county statistics. Census block level availability will appear once zoomed in.

County statistics are based on a fixed, terrestrial broadband definition of 25 Mbps down and 3 Mbps up, and where the broadband service is available to more than 80% of locations in a census block. Census blocks that did not meet this definition are delineated as 'Unserved'. The map depicts access to broadband, not subscription to broadband.

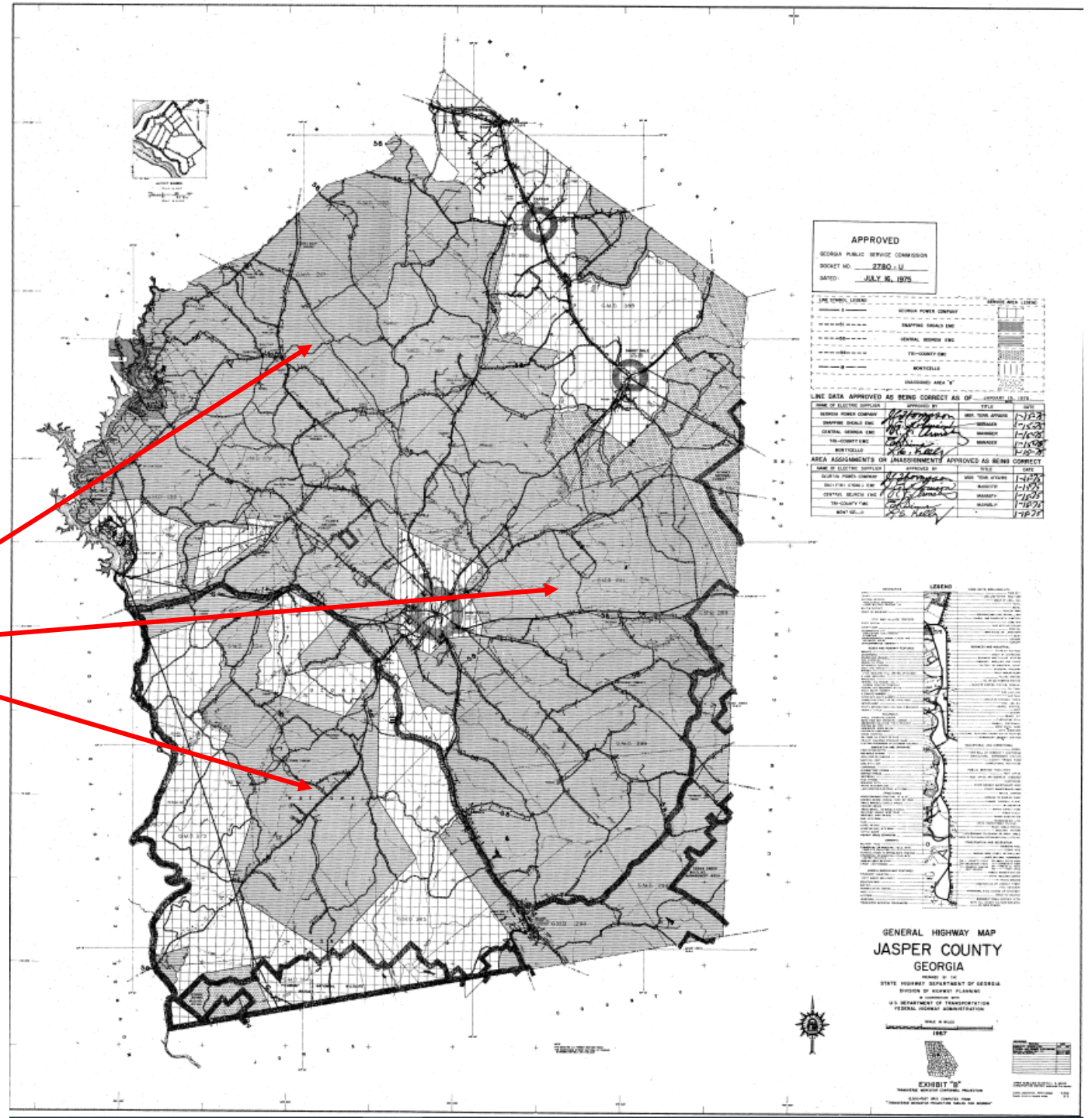
Broadband data is provided by the various Internet Service Providers of Georgia.

Location data are from commercially available sources.

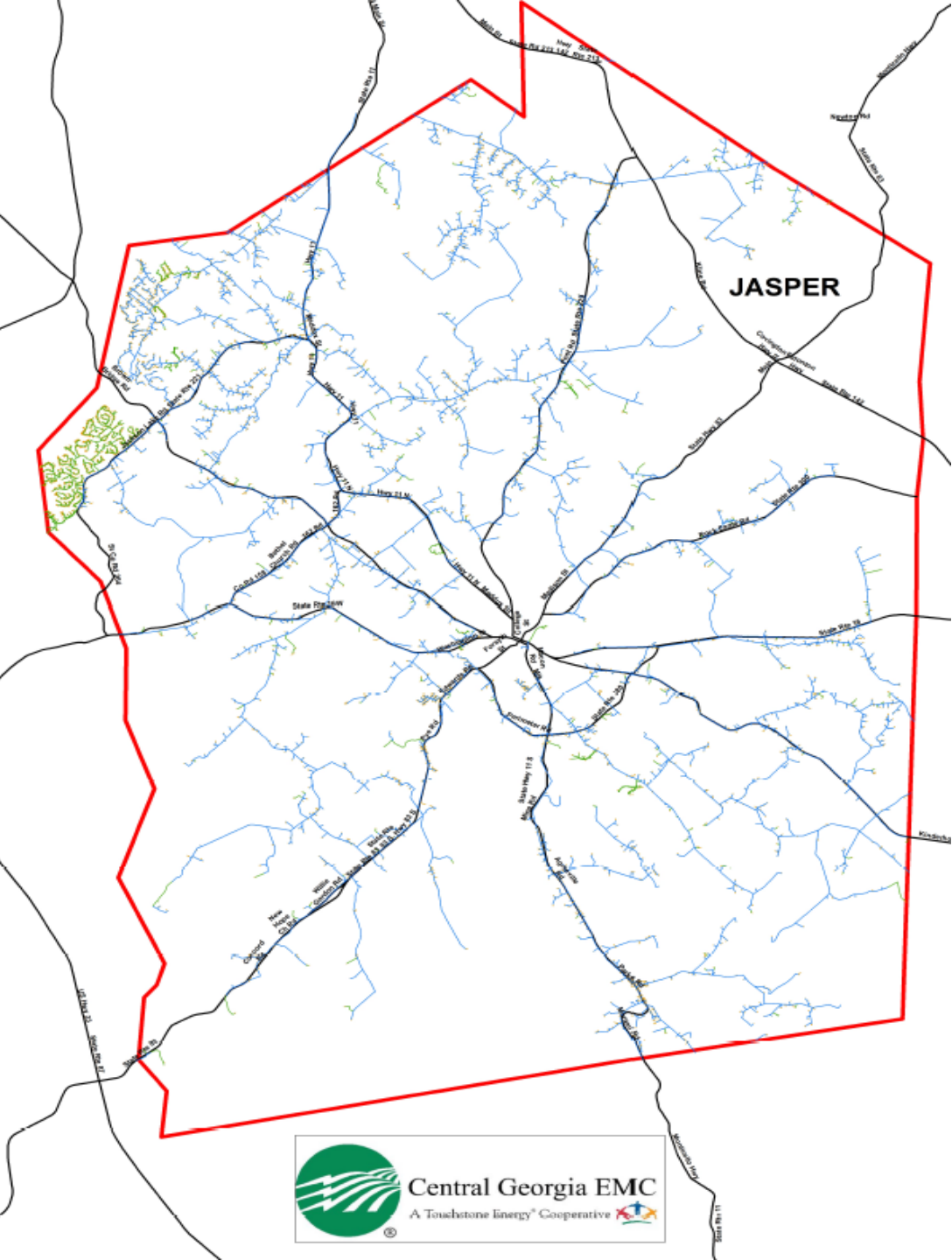


Electric Utility Service Territory Areas in Jasper County

CGEMC Territory Shading



Central Georgia EMC Power Line Corridors in Jasper County



Work Session Item – 2:

Department: Board of Commissioners

Date: March 22, 2021

Subject:

No Littering Signage Program

Summary:

Discussion of County wide no littering signage program

Work Session Item – 3:

Department: Board of Commissioners

Date: March 22, 2021

Subject:

Additional Topics

Summary:

As Needed